

LAKE ASSESSMENT REPORT

ADELAIDE, LAKE

6 /7 /2001

Lake assessments are being conducted to contribute physical and ecological data to the Atlas as a collaborative effort between project partners. The goal is to rapidly assess many of the lakes in the county and thus provide stakeholders a better understanding of the character of the lake, its shore, and the aquatic plants present there. These data are intended to assist in the future management of the lake and its watershed.

The first section of the report provides the results of the bottom mapping effort: a contour (bathymetric) map of the lake, area, volume and depth statistics, and the water level at the time of assessment (if available).

The second section provides the results of the ecological (vegetation) assessment conducted on the lake. These results can be used to better manage vegetation in the lake. A list is provided with the different plant species found at various sites around the lake. Potentially invasive, exotic (non-native) species are identified in a plant list and the percent of exotics is presented in a summary table. The results of this study are compared with other lakes in the watershed.

The intent of the assessment is to provide a starting point from which to track changes in the lake. These data can provide the information needed to determine changes and to monitor trends in physical condition and ecological health of the lake.

I. Physical Data – Area, Depth, Volume, & Bottom Contours

The bottom of the lake was mapped using a Global Positioning System (GPS) to determine the boat's position, and a depth-finder to provide depth associated with that measured position. The result is an estimate of the lake's area, mean and maximum depths, and volume (Table 1) and the creation of a bottom contour map. *NOTE: This map is for recreational purposes only.*

Table 1. Physical Characteristics of the Lake

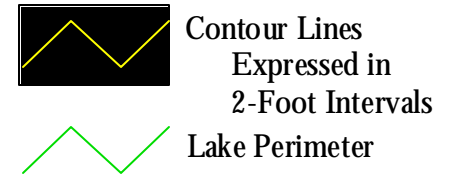
Surface Area (acres):	<u>23</u>
Mean Depth (feet):	<u>7.2</u>
Maximum Depth (feet):	<u>12.4</u>
Volume (gallons):	<u>54,291,084</u>



The lake assessments are created in partnership with Seminole County and the Florida Center for Community Design and Research. If you have any questions, please use the "Contact Us" form on the Seminole Atlas Website (www.seminole.wateratlas.org).

Lake Adelaide

Section - Township - Range
13-21-29



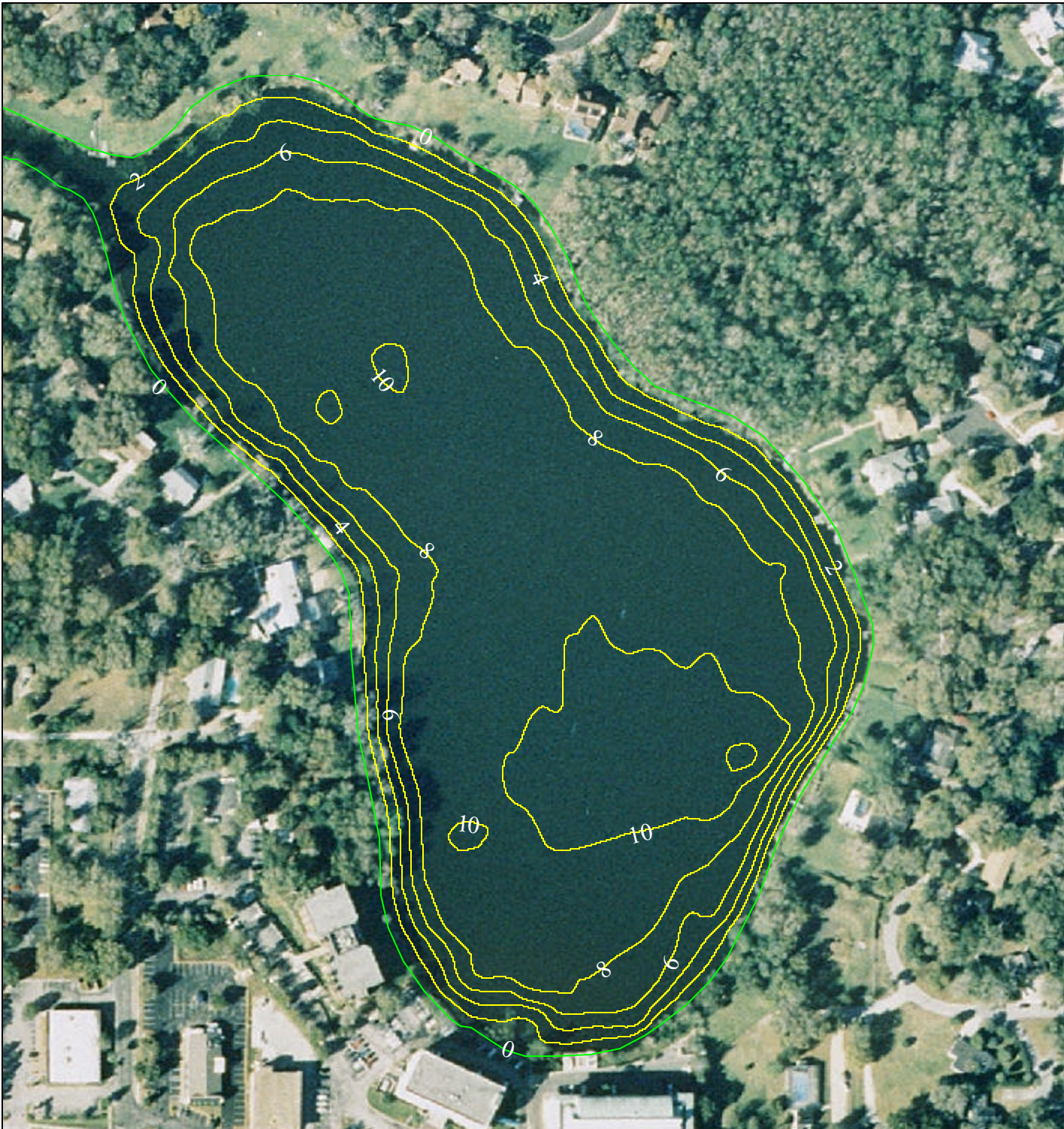
EXPLANATION:

Assessment Date: June 7, 2001.

Lake water level was 54.70 ft. above sea level when the lake was assessed. Contours are expressed in absolute depth below this level.

DATA SOURCES:

Seminole County 1999 color aerials provided by Seminole County Public Works. All contours generated by the Florida Center for Community Design and Research based on GPS/Sonar data provided by the Seminole County Stormwater Division. Perimeter file was generated by extracting the SJRWMD 1-foot contour line that was closest to the lake water level the day of assessment.



II. Ecological Data - Aquatic Plant Survey

Approximately equispaced sites (typically ten or more) are mapped around the lake and the aquatic plants at each site are surveyed. The total number of species from all sites is used to approximate the total diversity of aquatic plants and the percent of invasive-exotic plants on the lake and in the watershed (Table 2). Many of these plants are considered ecologically harmful, as they tend to out-compete beneficial native species. Such “nuisance” plants can also make boating and other recreational activities difficult or impossible. The common and scientific names of plant species found on your lake are listed in Table 3.

Table 2. Comparison of species diversity between the lake and other assessed lakes located within the same watershed

	<u>Lake</u> ADELAIDE, LAKE	<u>Watershed</u> Little Wekiva (Average)
Number of Taxa:	35	36
Percent Exotic Plants:	17%	18%

Table 3. Botanical and common names of the most commonly found plants on the lake. Percent frequency (of occurrence), habit (location where found), status (native or exotic), and EPPC status are provided

Common Name	Scientific Name	Frequency	Habit	Status	EPPC
Peruvian Primrosewillow	Ludwigia peruviana	60%	Emergent	Exotic	NL
Torpedo Grass	Panicum repens	60%	Emergent	Exotic	I
Algal Mats, Floating	Algal spp.	50%	Floating	Unknown	Unknow
Manyflower Marshpennywort, Water Penny	Hydrocotyl umbellata	50%	Emergent	Native	NL
Spatterdock, Yellow Pondlily	Nuphar lutea	50%	Floating	Native	NL
Cattails	Typha spp.	50%	Emergent	Native	NL
Southern Red Maple	Acer rubrum	40%	Emergent	Native	NL
Buttonbush	Cephalanthus occidentalis	40%	Emergent	Native	NL
Umbrella Flat Sedge	Cyperus alternifolius	40%	Emergent	Exotic	II
Smartweed, Knotweed	Polygonum spp.	40%	Emergent	Native	NL
Alligator Weed	Alternanthera philoxeroides	30%	Emergent	Exotic	II
Bog Hemp, False Nettle	Boehmeria cylindrica	30%	Emergent	Native	NL
Asian Pennywort, Coinwort	Centella asiatica	30%	Emergent	Native	NL
Roadgrass, Spikerushes	Eleocharis spp.	30%	Emergent	Native	NL
Climbing Hempvine	Mikania scandens	30%	Emergent	Native	NL
Maidencane	Panicum hemitomon	30%	Emergent	Native	NL
Elderberry	Sambucus canadensis	30%	Emergent	Native	NL
Aster spp., Elliot's Aster	Aster spp.	20%	Unknown	Unknown	Unknow

Carolina Mosquito Fern	<i>Azolla caroliniana</i>	20%	Floating	Native	NL
Sedge	<i>Carex</i> spp.	20%	Emergent	Unknown	
Wax Myrtle	<i>Myrica cerifera</i>	20%	Emergent	Native	NL
Pickereel Weed	<i>Pontederia cordata</i>	20%	Emergent	Native	NL
Willow	<i>Salix</i> spp.	20%	Emergent	Native	NL
Chinese Tallow Tree	<i>Sapium sebiferum</i>	20%	Emergent	Exotic	I
Common Bacopa	<i>Bacopa monnieri</i>	10%	Submersed	Native	NL
Camphor-tree	<i>Cinnamomum camphora</i>	10%	Emergent	Native	I
Wild Taro	<i>Colocasia esculenta</i>	10%	Emergent	Exotic	I
Dayflower	<i>Commelina</i> spp.	10%	Emergent	Native	NL
Sedge	<i>Cyperus</i> spp.	10%	Emergent	Unknown	NL
Buttonweed	<i>Diodia virginiana</i>	10%	Emergent	Native	NL
Southern Umbrellasedge	<i>Fuirena scirpoidea</i>	10%	Emergent	Native	NL
Dahoon Holly	<i>Ilex cassine</i>	10%	Emergent	Native	NL
Rush	<i>Juncus</i> spp.	10%	Emergent	Native	NL
Frog-fruit, Carpetweed, Turkey Tangle Fogf	<i>Phyla nodiflorea</i>	10%	Emergent	Native	NL
Duck Potato	<i>Sagittaria lancifolia</i>	10%	Emergent	Native	NL