

# LAKE ASSESSMENT REPORT

## TRIPLET, NORTH LAKE

6 /4 /2002

---

---

Lake assessments are being conducted to contribute physical and ecological data to the Atlas as a collaborative effort between project partners. The goal is to rapidly assess many of the lakes in the county and thus provide stakeholders a better understanding of the character of the lake, its shore, and the aquatic plants present there. These data are intended to assist in the future management of the lake and its watershed.

The first section of the report provides the results of the bottom mapping effort: a contour (bathymetric) map of the lake, area, volume and depth statistics, and the water level at the time of assessment (if available).

The second section provides the results of the ecological (vegetation) assessment conducted on the lake. These results can be used to better manage vegetation in the lake. A list is provided with the different plant species found at various sites around the lake. Potentially invasive, exotic (non-native) species are identified in a plant list and the percent of exotics is presented in a summary table. The results of this study are compared with other lakes in the watershed.

The intent of the assessment is to provide a starting point from which to track changes in the lake. These data can provide the information needed to determine changes and to monitor trends in physical condition and ecological health of the lake.

### I. Physical Data – Area, Depth, Volume, & Bottom Contours

The bottom of the lake was mapped using a Global Positioning System (GPS) to determine the boat's position, and a depth-finder to provide depth associated with that measured position. The result is an estimate of the lake's area, mean and maximum depths, and volume (Table 1) and the creation of a bottom contour map. *NOTE: This map is for recreational purposes only.*

**Table 1. Physical Characteristics of the Lake**

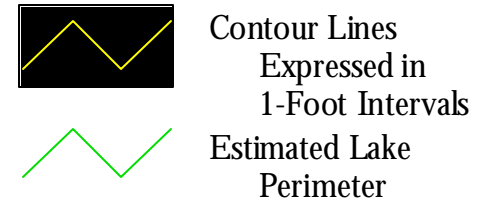
Surface Area (acres):	21
Mean Depth (feet):	4.8
Maximum Depth (feet):	12.1
Volume (gallons):	32,925,847



The lake assessments are created in partnership with Seminole County and the Florida Center for Community Design and Research. If you have any questions, please use the "Contact Us" form on the Seminole Atlas Website ([www.seminole.wateratlas.org](http://www.seminole.wateratlas.org)).

# North Lake Triplet

Section - Township - Range  
9-21-30

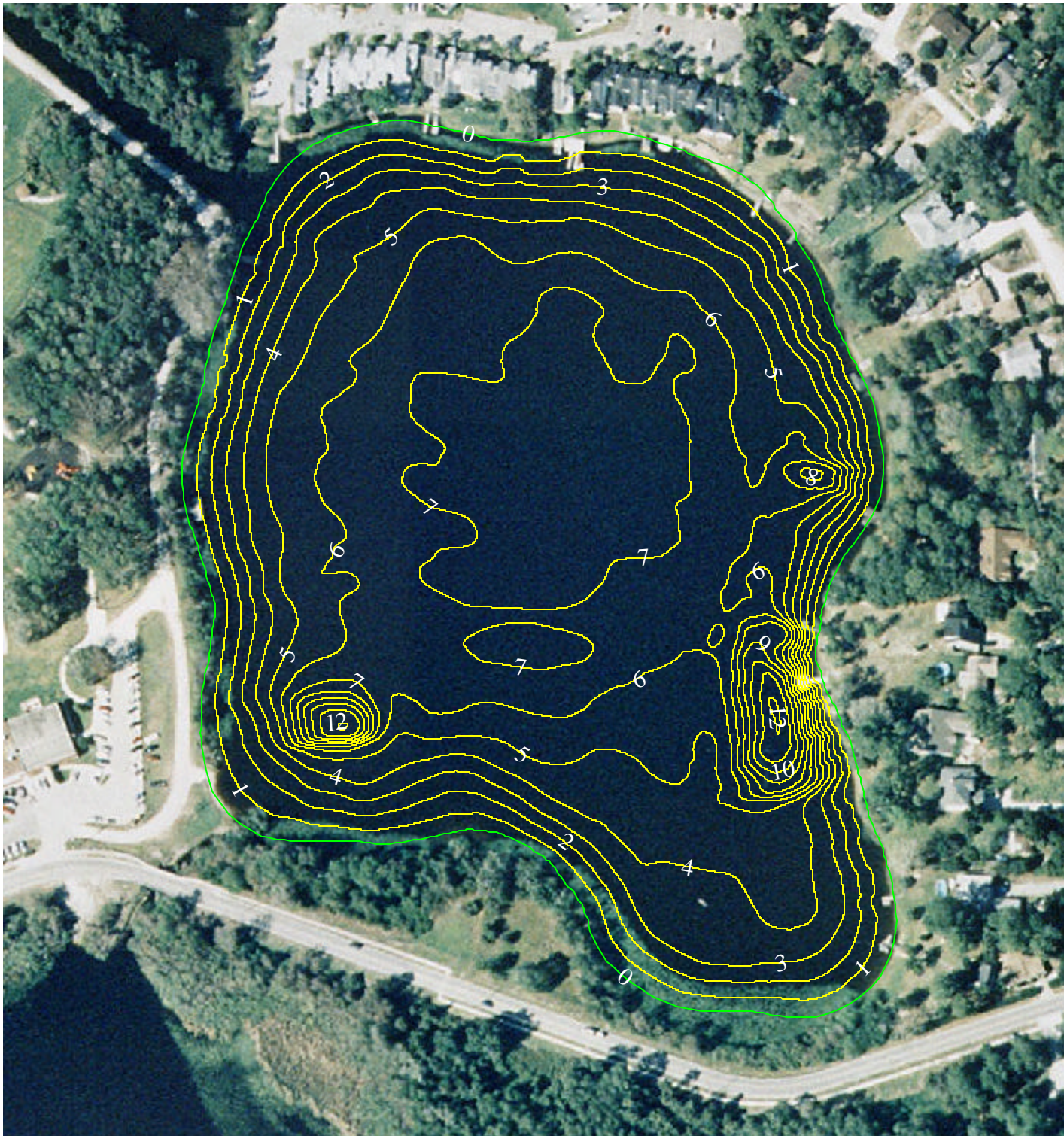
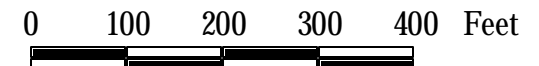


## EXPLANATION:

Assessment Date: June 4, 2002.  
Lake water level was 49.8 feet above sea level when the lake was assessed.  
Contours are expressed in absolute depth below this level and may not exclude the presence of submersed aquatic vegetation

## DATA SOURCES:

Seminole County 1999 color aerials provided by Seminole County Public Works. All contours generated by Florida Center for Community Design and Research based on GPS/Sonar data provided by the Seminole County Stormwater Division.



## II. Ecological Data - Aquatic Plant Survey

Approximately equispaced sites (typically ten or more) are mapped around the lake and the aquatic plants at each site are surveyed. The total number of species from all sites is used to approximate the total diversity of aquatic plants and the percent of invasive-exotic plants on the lake and in the watershed (Table 2). Many of these plants are considered ecologically harmful, as they tend to out-compete beneficial native species. Such “nuisance” plants can also make boating and other recreational activities difficult or impossible. The common and scientific names of plant species found on your lake are listed in Table 3.

**Table 2. Comparison of species diversity between the lake and other assessed lakes located within the same watershed**

	<u>Lake</u>	<u>Watershed</u>
	TRIPLET, NORTH LAKE	Gee Creek
	(Average)	
Number of Taxa:	36	30
Percent Exotic Plants:	11%	20%

**Table 3. Botanical and common names of the most commonly found plants on the lake. Percent frequency (of occurrence), habit (location where found), status (native or exotic), and EPPC status are provided**

Common Name	Scientific Name	Frequency	Habit	Status	EPPC
Manyflower Marshpennywort, Water Penny	<i>Hydrocotyl umbellata</i>	78%	Emergent	Native	NL
Manatee Mudflower, Baby's Tears	<i>Micranthemum glomeratum</i>	78%	Submersed	Native	NL
Torpedo Grass	<i>Panicum repens</i>	78%	Emergent	Exotic	I
Peruvian Primrosewillow	<i>Ludwigia peruviana</i>	67%	Emergent	Exotic	NL
Climbing Hempvine	<i>Mikania scandens</i>	67%	Emergent	Native	NL
Spatterdock, Yellow Pondlily	<i>Nuphar lutea</i>	67%	Floating	Native	NL
Southern Red Maple	<i>Acer rubrum</i>	44%	Emergent	Native	NL
Sedge	<i>Carex spp.</i>	44%	Emergent	Unknown	
Buttonbush	<i>Cephalanthus occidentalis</i>	44%	Emergent	Native	NL
Wild Taro	<i>Colocasia esculenta</i>	44%	Emergent	Exotic	I
Pickereel Weed	<i>Pontederia cordata</i>	44%	Emergent	Native	NL
Alligator Weed	<i>Alternanthera philoxeroides</i>	33%	Emergent	Exotic	II
Asian Pennywort, Coinwort	<i>Centella asiatica</i>	33%	Emergent	Native	NL
Yerba De Tajo	<i>Eclipta alba</i>	33%	Emergent	Native	NL
Dahoon Holly	<i>Ilex cassine</i>	22%	Emergent	Native	NL
Creeping Primrosewillow, Red Ludwigia	<i>Ludwigia repens</i>	22%	Emergent	Native	NL
Water Primroses, Primrosewillow	<i>Ludwigia spp.</i>	22%	Emergent	Unknown	NL
Sweetbay Magnolia	<i>Magnolia virginiana</i>	22%	Emergent	Native	NL

Wax Myrtle	<i>Myrica cerifera</i>	22%	Emergent	Native	NL
Frog-fruit, Carpetweed, Turkey Tangle Fogf	<i>Phyla nodiflorea</i>	22%	Emergent	Native	NL
Smartweed, Knotweed	<i>Polygonum</i> spp.	22%	Emergent	Native	NL
Pond Weed	<i>Potamogeton illinoensis</i>	22%	Submersed	Native	NL
Carolina Willow	<i>Salix caroliniana</i>	22%	Emergent	Native	NL
Cattails	<i>Typha</i> spp.	22%	Emergent	Native	NL
Tapegrass	<i>Valisneria americana</i>	22%	Submersed	Native	NL
Algal Mats, Floating	Algal spp.	11%	Floating	Unknown	Unknown
Aster spp., Elliot's Aster	Aster spp.	11%	Unknown	Unknown	Unknown
Common Bacopa	<i>Bacopa monnieri</i>	11%	Submersed	Native	NL
Baldwin's Spikerush, Roadgrass	<i>Eleocharis baldwinii</i>	11%	Submersed	Native	NL
Loblolly Bay	<i>Gordonia lasianthus</i>	11%	Emergent	Native	NL
Cinnamon Fern	<i>Osmunda cinnamomea</i>	11%	Emergent	Native	NL
Panic Grasses	<i>Panicum</i> spp.	11%	Emergent	Unknown	NL
Beaksedge, Beakrush	<i>Rhynchospora</i> spp.	11%	Emergent	Unknown	NL
Willow	<i>Salix</i> spp.	11%	Emergent	Native	NL
Water Spangles, Water Fern	<i>Salvinia minima</i>	11%	Floating	Native	NL
Bald Cypress	<i>Taxodium distichum</i>	11%	Emergent	Native	NL