

LAKE ASSESSMENT REPORT

ROCK LAKE

8 /29/2002

Lake assessments are being conducted to contribute physical and ecological data to the Atlas as a collaborative effort between project partners. The goal is to rapidly assess many of the lakes in the county and thus provide stakeholders a better understanding of the character of the lake, its shore, and the aquatic plants present there. These data are intended to assist in the future management of the lake and its watershed.

The first section of the report provides the results of the bottom mapping effort: a contour (bathymetric) map of the lake, area, volume and depth statistics, and the water level at the time of assessment (if available).

The second section provides the results of the ecological (vegetation) assessment conducted on the lake. These results can be used to better manage vegetation in the lake. A list is provided with the different plant species found at various sites around the lake. Potentially invasive, exotic (non-native) species are identified in a plant list and the percent of exotics is presented in a summary table. The results of this study are compared with other lakes in the watershed.

The intent of the assessment is to provide a starting point from which to track changes in the lake. These data can provide the information needed to determine changes and to monitor trends in physical condition and ecological health of the lake.

I. Physical Data – Area, Depth, Volume, & Bottom Contours

The bottom of the lake was mapped using a Global Positioning System (GPS) to determine the boat's position, and a depth-finder to provide depth associated with that measured position. The result is an estimate of the lake's area, mean and maximum depths, and volume (Table 1) and the creation of a bottom contour map. *NOTE: This map is for recreational purposes only.*

Table 1. Physical Characteristics of the Lake

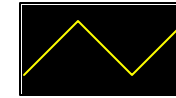
Surface Area (acres):	19
Mean Depth (feet):	7.1
Maximum Depth (feet):	14.5
Volume (gallons):	43,550,588



The lake assessments are created in partnership with Seminole County and the Florida Center for Community Design and Research. If you have any questions, please use the "Contact Us" form on the Seminole Atlas Website (www.seminole.wateratlas.org).

Rock Lake

Section - Township - Range
36-20-29



Contour Lines
Expressed in
2-Foot Intervals



Estimated Lake
Perimeter

EXPLANATION:

Assessment Date: August 29, 2002.

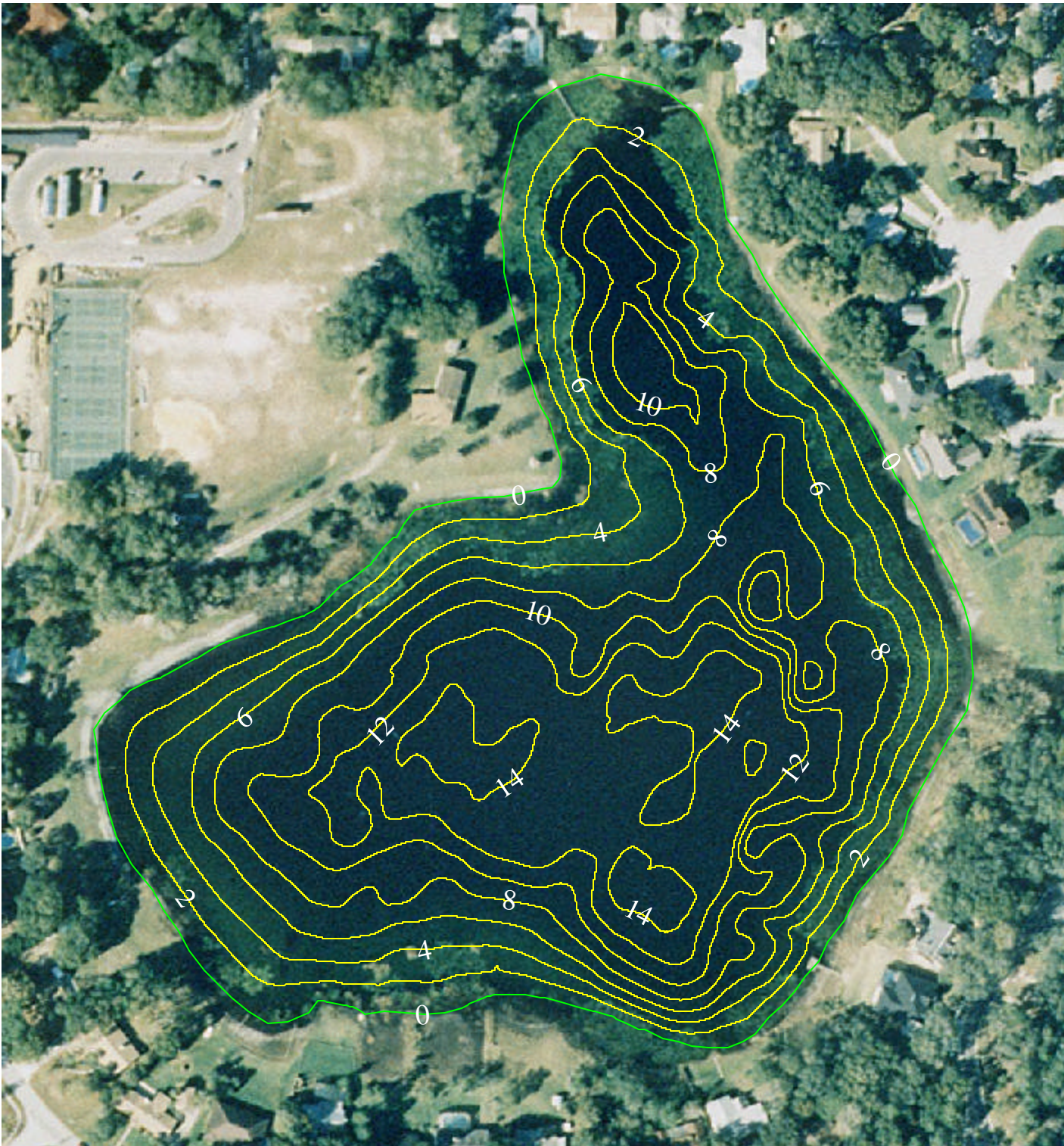
Lake water level was 79 feet above sea level when the lake was assessed. Contours are expressed in absolute depth below this level and may not exclude the presence of submersed aquatic vegetation.

DATA SOURCES:

Seminole County 1999 color aerials provided by Seminole County Public Works. All contours generated by Florida Center for Community Design and Research based on GPS/Sonar data provided by the Seminole County Stormwater Division.



0 100 200 300 400 Feet



II. Ecological Data - Aquatic Plant Survey

Approximately equispaced sites (typically ten or more) are mapped around the lake and the aquatic plants at each site are surveyed. The total number of species from all sites is used to approximate the total diversity of aquatic plants and the percent of invasive-exotic plants on the lake and in the watershed (Table 2). Many of these plants are considered ecologically harmful, as they tend to out-compete beneficial native species. Such “nuisance” plants can also make boating and other recreational activities difficult or impossible. The common and scientific names of plant species found on your lake are listed in Table 3.

Table 2. Comparison of species diversity between the lake and other assessed lakes located within the same watershed

	<u>Lake</u> ROCK LAKE	<u>Watershed</u> Soldiers Creek
	(Average)	
Number of Taxa:	21	24
Percent Exotic Plants:	10%	16%

Table 3. Botanical and common names of the most commonly found plants on the lake. Percent frequency (of occurrence), habit (location where found), status (native or exotic), and EPPC status are provided

Common Name	Scientific Name	Frequency	Habit	Status	EPPC
Algal Mats, Floating	Algal spp.	86%	Floating	Unknown	Unknown
American White Water Lily, Fragrant Water	Nymphaea odorata	86%	Floating	Native	NL
Baldwin's Spikerush, Roadgrass	Eleocharis baldwinii	71%	Submersed	Native	NL
Manyflower Marshpennywort, Water Penny	Hydrocotyl umbellata	71%	Emergent	Native	NL
Torpedo Grass	Panicum repens	71%	Emergent	Exotic	I
Yellow-eyed Grass	Xyris spp.	71%	Emergent	Native	NL
Common Bacopa	Bacopa monnieri	57%	Submersed	Native	NL
Maidencane	Panicum hemitomon	57%	Emergent	Native	NL
Southern Red Maple	Acer rubrum	29%	Emergent	Native	NL
Fragrant Flatsedge	Cyperus odoratus	29%	Emergent	Native	NL
Mexican Primrosewillow, Long-stalked Lud	Ludwigia octovalvis	29%	Emergent	Native	NL
Wax Myrtle	Myrica cerifera	29%	Emergent	Native	NL
Pickereel Weed	Pontederia cordata	29%	Emergent	Native	NL
Bald Cypress	Taxodium distichum	29%	Emergent	Native	NL
Asian Pennywort, Coinwort	Centella asiatica	14%	Emergent	Native	NL
Sedge	Cyperus spp.	14%	Emergent	Unknown	NL
Hypericum spp., St. John's Wort	Hypericum spp.	14%	Emergent	Unknown	Unknown
Fourpetal St. John's-Wort	Hypericum tetrapetalum	14%	Emergent	Native	NL

Chinese Tallow Tree	Sapium sebiferum	14%	Emergent	Exotic	I
Bladderwort	Utricularia spp.	14%	Submersed	Native	NL